

Resultz®

Isopropyl Myristate Rinse

Head lice treatment

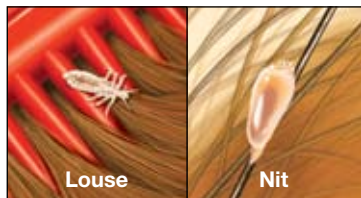
- Works for the whole family
- No chemical residue
- Colourless and odourless
- Works in just 10 minutes

Does not contain commonly used pesticides.



TREATING HEAD LICE INFESTATIONS WITH RESULTZ® LICE TREATMENT

ABOUT LICE AND THEIR LIFE CYCLE



What are head lice?

Lice are tiny insects that feed on human blood. Head lice are about as big as sesame seeds

(approximately 1-3 mm in size) and live on the human scalp. Lice cannot fly or jump from one person to another; they can only crawl.

What are nits (or eggs)? Nits are eggs laid by the female louse. They are about the size of a poppy seed and are difficult to see because their colour easily blends in with the infested person's hair. Eggs are attached to hair with a waterproof, glue-like substance that can't be washed or blown away.

How long do lice live? They can live approximately 40-50 days and go through 3 stages in their life cycle.

NITS: The female louse lays the egg with a special glue that cements it to the hair shaft near the root.

The eggs develop and hatch approximately 7-10 days later. While lice treatments effectively kill lice, they do not kill all of the eggs. This is why it is important to treat a second time when the eggs have hatched.

NYPHPS: Once the louse hatches, it is called a nymph and is barely visible to the naked eye. The nymph looks just like an adult louse except that it is smaller and cannot reproduce because it is not fully developed. After 12 days, the nymph develops into an adult. The nymph stage can last from Day 11 to Day 22 or even longer in cold weather.

ADULTS: The adult louse can lay 4-10 eggs a day (50-150 eggs in her lifetime), starting another generation of lice. The adult stage can last about 28 days (Day 23 to Day 50).

HOW DO I CHECK FOR HEAD LICE?

- Examine the head under bright natural light. Head lice may be hard to detect because they move quickly and are very small.
- Newly laid eggs are almost transparent. It is helpful to examine the head from different angles or light. This is easily achieved by moving around the child/adult while examining.
- Part the hair and closely examine the scalp, especially the nape of the neck and behind the ears.
- To find the eggs, look for small white or yellowish-brown specks that are about the size of a poppy seed. You may see lice quickly moving away from the sunlight.
- To tell the difference between eggs and dandruff, try to dislodge them from the hair shaft. If they are not easily removed, they are probably eggs.

HOW DO LICE SPREAD?

Spread and infestation are common. You can catch lice from head to head contact or by sharing personal items. To prevent spreading, DON'T share or borrow hair items such as combs, headbands, headgear, hats, headphones or other personal items. All clothing, headgear, scarves, towels and bedding should be washed in very hot water and put in the dryer on the hottest setting for a minimum of 20 minutes. Dry cleaning should suffice for blankets, jackets, and other non-washables. Mattresses which have been used by an infested person should not be used for 48 hours. Combs should be washed.

HOW DOES RESULTZ® WORK?

Lice have a waxy covering on a hard shell that protects their body from losing water through evaporation. The loss of too much water from their body will cause them to die. RESULTZ® contains isopropyl myristate, a common ingredient in many cosmetic products. Isopropyl myristate dissolves the waxy shell of lice, causing water loss from their body. Once they lose this protective layer, the lice dehydrate, become immobile and die. It's important that all lice on the infested person's head are in contact with RESULTZ® to ensure it will work effectively.

Because RESULTZ® works differently from other commonly used head lice treatments, it may also be an effective treatment in those cases where others have failed.

TREATMENT OF HEAD LICE INFESTATION

DAY ONE

- Use towels to protect the child/adult's eyes from treatment and prevent clothes from getting wet.
- Apply product to dry hair and massage into the hair until the scalp, especially the sides and nape (back underneath the hair) of the neck, are thoroughly wet with the product. This may take several minutes.
- Lice can crawl up and down the shaft of the hair quickly so it is important to apply the treatment to the scalp as well as from the roots to the ends of the hair. **See Usage Guidelines to estimate how much product you will need.**
- After completing application, allow product to remain on hair for 10 minutes.
- At the end of 10 minutes, rinse with warm water and wash hair, if desired. The feel of the product may remain on the hair following rinsing, this can assist with combing.

- If desired, nits and dead lice can be removed, following treatment, by combing with the fine tooth comb provided.
 - o Comb wet hair with a regular comb to remove tangles.
 - o Separate a section of hair not wider than the lice removal comb.
 - o Using this comb tilted toward the scalp, comb section from scalp to end of hair.
 - o Wipe comb with tissue and place tissue in a sealable plastic bag.
 - o Repeat until all hair has been combed to remove eggs, wiping comb with a tissue after each combing.
 - o Dispose of all tissues in a sealed plastic bag; wash comb as described (see **Daily Checking to Prevent Reinfestation**).

DAY SEVEN to TEN

- Repeat RESULTZ® application 7 to 10 days after the first treatment. A second treatment should be applied to kill any lice newly hatched from eggs. See **Lice and their Life Cycle** for more information.

USAGE GUIDELINES

Approximate dosage for 1 adult/child 2 years of age and older

HAIR LENGTH	PER APPLICATION	TOTAL PER TREATMENT (2 applications)
Short	30-60 mL	60-120 mL
Shoulder length	60-90 mL	120-180 mL
Long	90-120 mL	180-240 mL

DAILY CHECKING TO PREVENT

REINFESTATION:

- Carefully inspect family members daily between treatments and for at least 2 weeks after treatment.
- Check all family members for head lice. If anyone in the family is infested, treat as soon as possible with RESULTZ®.
- Soak all combs, including nit combs, and brushes in hot water – at least 54°C for 10 minutes. Always inspect and rinse thoroughly before using. Avoid placing combs with plastic components in boiling water.
- For more tips on preventing the spread and reinfestation of lice, see **How do Lice Spread**.

WARNINGS

- For external use only.
- Do not use near the eyes. If product gets into eyes, immediately flush with water.
- Keep out of reach of children.
- If swallowed, get medical help or contact a Poison Control Centre.
- If the infestation recurs or persists after the second application, consult your doctor.

NOTE: As RESULTZ® does not contain pyrethrins or permethrins, it is less likely to cause allergic reactions in those sensitive to ragweed or chrysanthemum.

WHEN USING RESULTZ®

- Keep out of eyes when rinsing hair.
- Close eyes tightly and do not open eyes until product is rinsed out.
- Protect eyes with washcloth, towel or other suitable method. If product gets into the eyes, flush with water.
- Care should be taken when applying this product since it will make hard surfaces such as floors and baths slippery.
- Protect clothing and upholstery with a towel as this product may stain fabric.

• Stop use and consult your doctor if:

- o Skin irritation or infection is present or develops
- o Infestation of eyebrows or eyelashes occurs

Store at 15° - 30°C.

Do not store in direct sunlight.

Questions? Call 1-866-295-4636.

CAUTION - Keep away from any open flame or heat source which uses an open flame. Do not smoke while using this product.

www.BeatHeadLice.ca

® Registered Trademark of Nycomed Canada Inc.

Nycomed Canada Inc., Oakville, ON L6M 4X8

